

The TR4050 Fingerprint Register Instruction:

TR4050 uses 4 types Card to register or delete fingerprint and enrollment under different Access Mode:

1. Manager Enroll Card:

This card use to enter Enroll Mode when want to register fingerprint or User card, and to exit Enroll mode when finish register.

2. Manager Delete Card:

Use this Card to enter Delete Mode when want to delete fingerprints which had been enrolled into Fingerprint Module of TR4050, and to exit Delete Mode when finish fingerprint deletion.

3. User Card-A:

Using User Card-A for enrollment under “Finger-Only (or Card-Only)” Access mode, after enrollment in this mode, user can only has his/her enrolled fingerprint to be scan or only has his/her enrolled User Card-A to be read by TR4050.

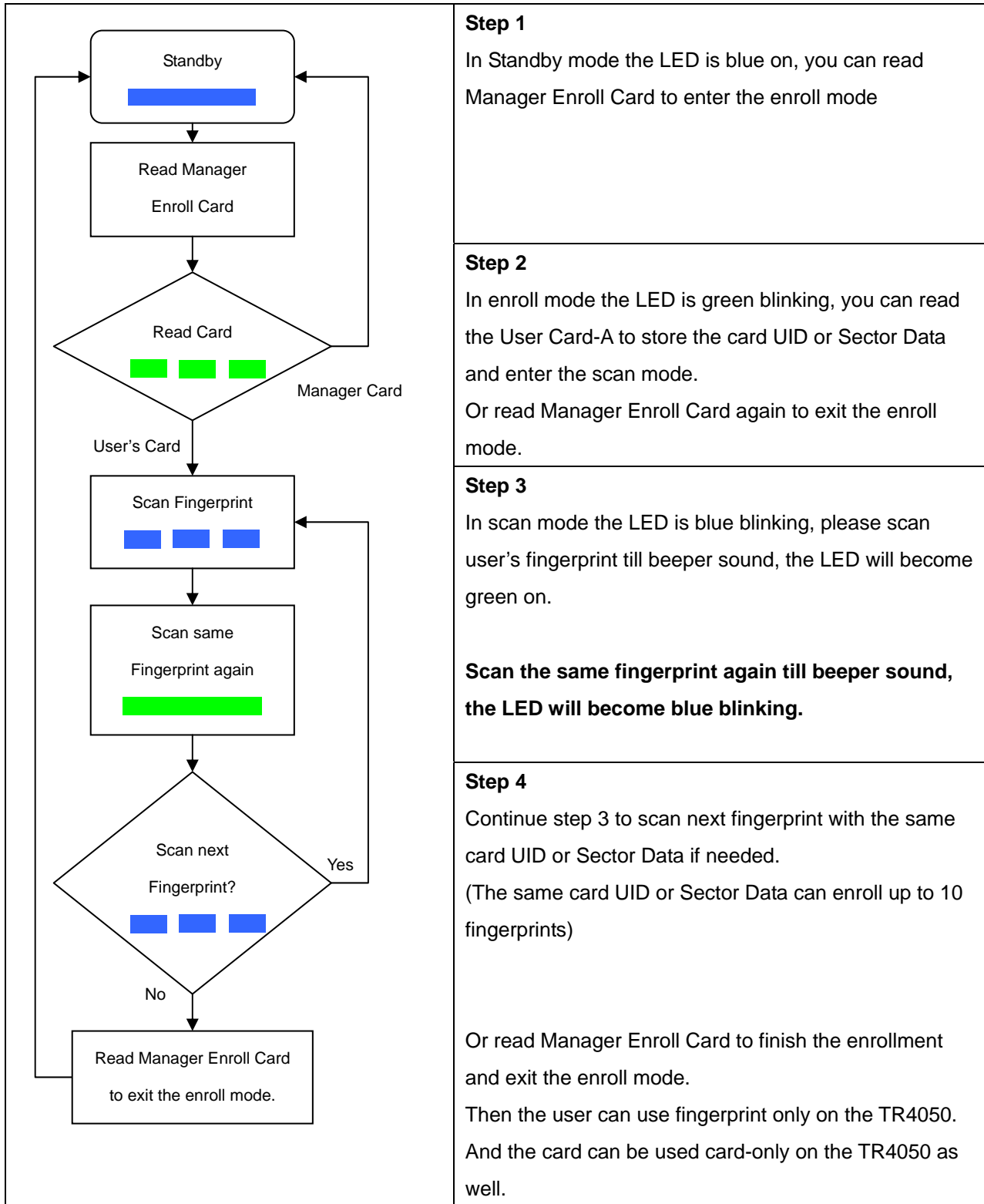
Using User Card-A for enrollment under “Card-Only” Access mode, after enrollment in this mode, user can only has his/her enrolled User Card-A to be read by TR4050.

4. User Card-B:

Using User Card-B for enrollment under “Card + Finger” Access mode, after enrollment in this mode, user has to let his/her enrolled User Card-B to be read first and then has his/her enrolled fingerprint to be scan by TR4050 later.

Applying Manager Enroll Card for enrollment under different access mode

1. Access Mode: "Finger Only (or Card Only)" (using User Card-A)



Step 1
In Standby mode the LED is blue on, you can read Manager Enroll Card to enter the enroll mode

Step 2
In enroll mode the LED is green blinking, you can read the User Card-A to store the card UID or Sector Data and enter the scan mode.
Or read Manager Enroll Card again to exit the enroll mode.

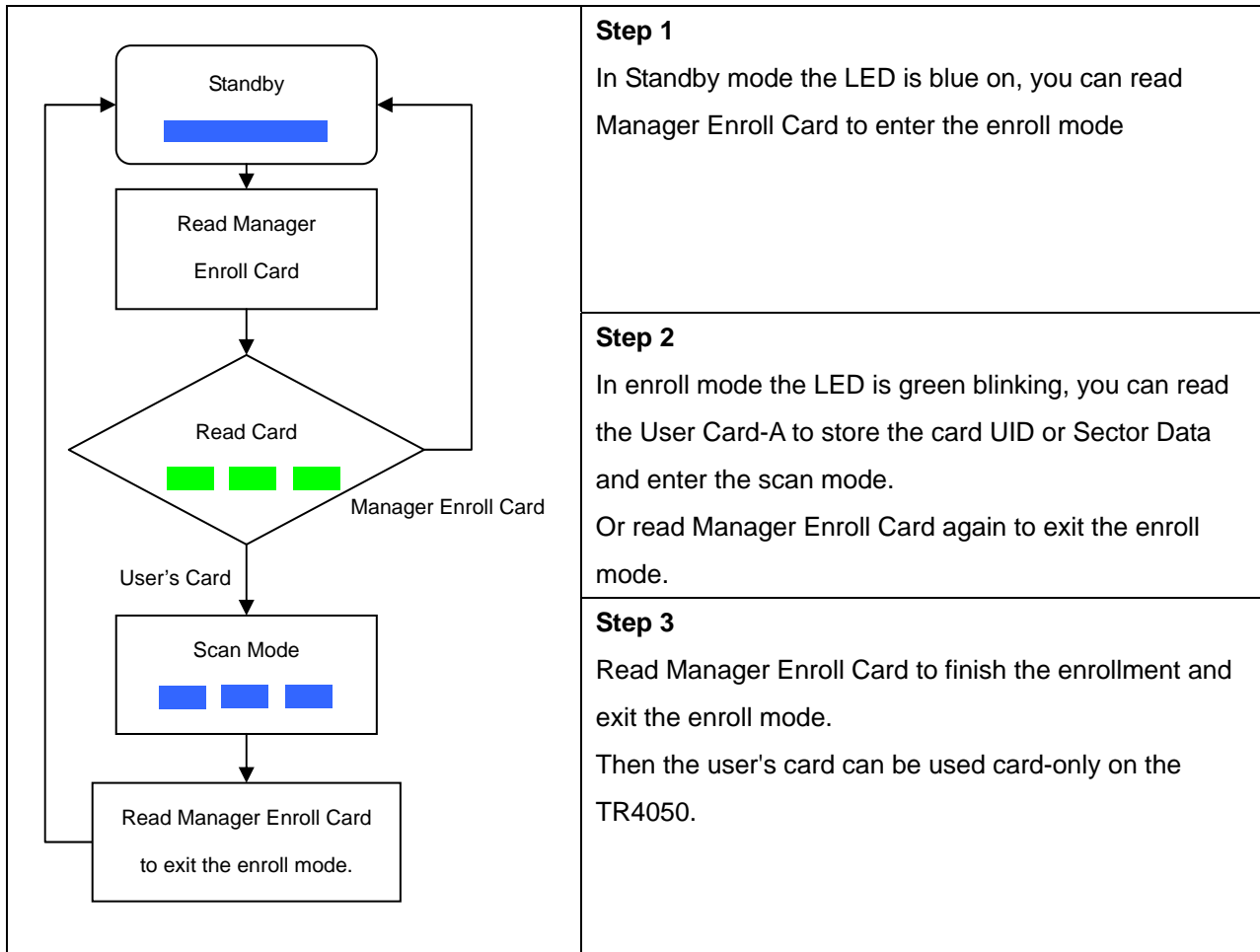
Step 3
In scan mode the LED is blue blinking, please scan user's fingerprint till beeper sound, the LED will become green on.
Scan the same fingerprint again till beeper sound, the LED will become blue blinking.

Step 4
Continue step 3 to scan next fingerprint with the same card UID or Sector Data if needed.
(The same card UID or Sector Data can enroll up to 10 fingerprints)

Or read Manager Enroll Card to finish the enrollment and exit the enroll mode.
Then the user can use fingerprint only on the TR4050.
And the card can be used card-only on the TR4050 as well.

Remark:
Warning! Keep the User Card and do not lose it! To delete user's fingerprint must use the same User Card. Once you lose User Card, you cannot delete user's fingerprint from reader.

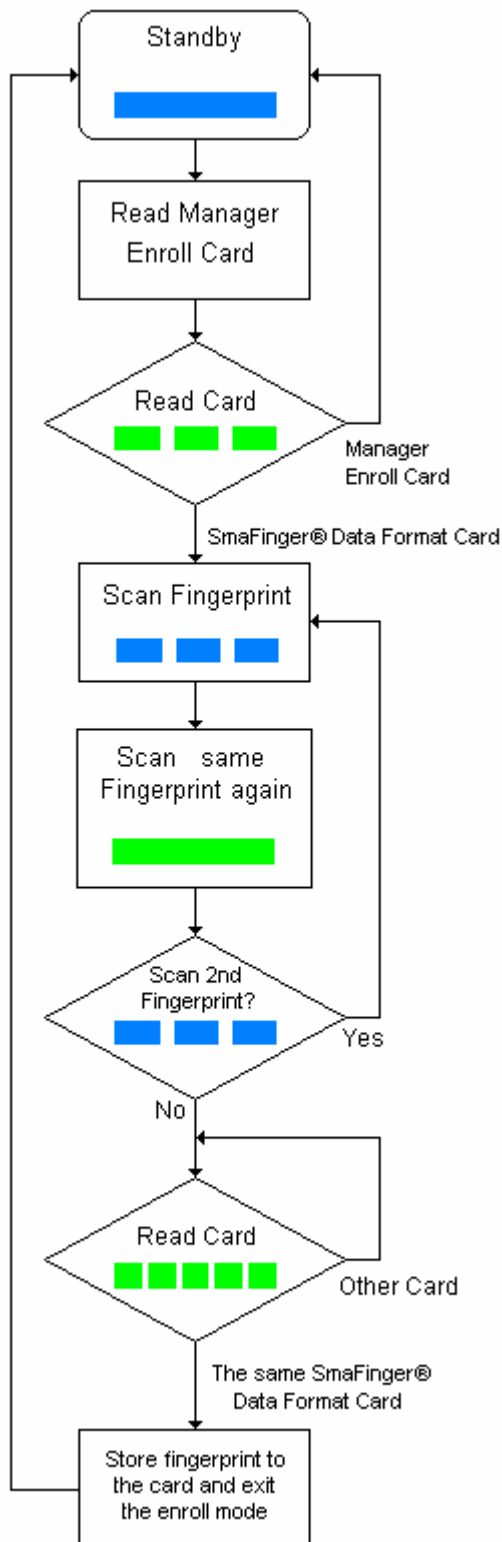
2. Access Mode: "Card Only" (using User Card-A)



Remark:

Warning! Keep the User Card and do not lose it! To delete user's fingerprint must use the same User Card. Once you lose User Card, you cannot delete user's fingerprint from reader.

3. Access Mode: “Card + Finger” (using User Card-B)



Step 1

In Standby mode the LED is blue on, you can read Manager Enroll Card to enter the enroll mode.

Step 2

In enroll mode the LED is green blinking, you can read the User Card-B to enter the scan mode.

Or read Manager Enroll Card again to exit enroll mode.

Step 3

In scan mode the LED is blue blinking, please scan user's fingerprint till beeper sound, the LED will become green on.

Scan the same fingerprint again till beeper sound, the LED will become blue blinking.

Step 4

Continue step 3 to scan second fingerprint with the same User Card-B if needed.

(The same card can register up to 2 fingerprints)

Step 5

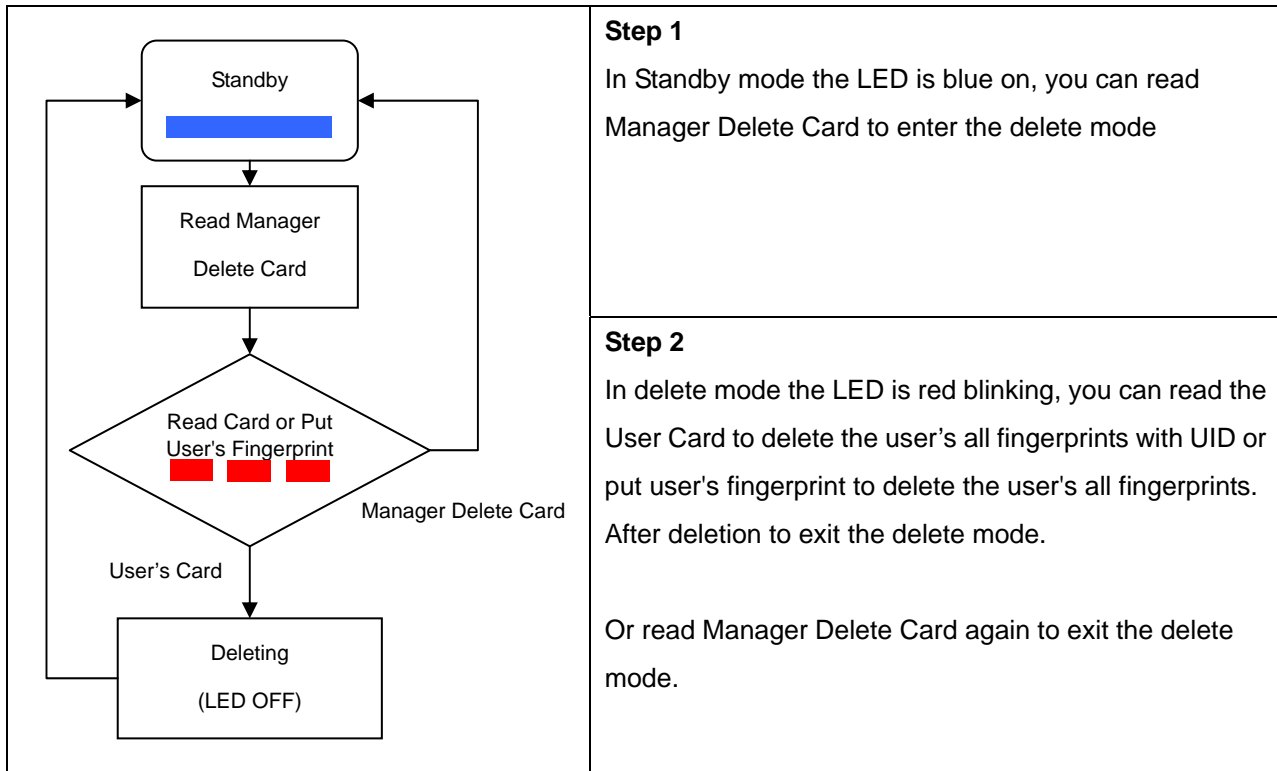
Read the same User Card-B to store fingerprint till beeper sound.

If not the same card, the green light will still be blinking fast until read the same card.

When card register is finished, it will exit the enroll mode.

Then the user can use Card+Finger on TR4050.

Applying Manager Delete Card for deletion



Note

PROMAG[®]

GIGA-TMS INC.

<http://www.gigatms.com.tw>

<mailto:promag@gigatms.com.tw>

TEL : +886-2-26954214

FAX : +886-2-26954213

Office: 8F, No. 31, Lane 169, Kang-Ning St., Hsi-Chih, Taipei, Taiwan